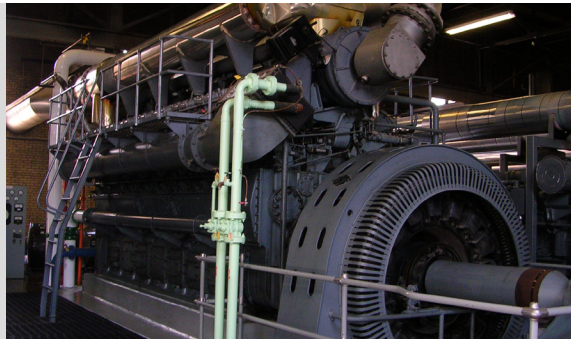


# IDP-801 Interactive Display Panel



## Overview

The IDP-801 Interactive Display Panel is a high-resolution, 7.5 inch (190.5 mm), color touch screen interface that permits the operator to monitor Basler Electric's Digital Excitation Control Systems, DECS-250, DECS-250N, DECS-250E, and DECS-450, perform control operations, and make routine adjustments to various set points. This next generation HMI can be placed locally on the exciter cabinets or remotely in a control room.

## Features

- Compatible with single or dual DECS-250, DECS-250N, DECS-250E, and DECS-450 excitation systems
- Trending and Alarm data retention in nonvolatile memory
- 7.5 in (190.5 mm) TFT LCD, 65K Color Display
- On screen configurable for synchronous generator or motor applications
- Recorded data is downloadable in .csv format to USB storage device for external viewing in MS Excel®.
- Ethernet and USB interface ports
- Easy feature upgrades via USB Flash port
- Multilevel Password Protection
- Horizontal or Vertical Generator Capability Curve
- Set point Adjustment Provisions
- Digital or Analog Metering views
  - Generator voltage and current
  - Frequency
  - Power Factor
  - Exciter voltage and current
  - Active, reactive, and apparent power
- Alarm and I/O status screens
- Start/Stop Capabilities

## Benefits

- Compact screen is ideally suited for applications with limited panel space.
- Digital or analog metering options can accommodate personal preferences.
- Alarm and Metering screens for quick system status indications.
- Graphically displays generator capability curve to show real time operating point for up-to-date load status.
- Control screen provides easy set point adjustment.



Figure 1 - IDP-801: DECS-450 Installation

## Specifications

### Power Supply

Nominal: 24 Vdc  
 Voltage Range: 19.2 to 28.8 Vdc  
 Power Dissipation: 12 W maximum  
 Inrush Current: 30 Adc maximum

### Display

Type: TFT color LCD  
 Size: 7.5 in (190.5 mm), diagonally  
 Resolution: 640 (W) by 480 (H) pixels  
 Color: 65 k

### Communication

USB: Type A (2.0), Type B (2.0)  
 Serial: RS-422/485, D-Sub9, 4,000 ft (1,219 m) maximum wire length  
 COM1 RS-232, D-sub 9  
 COM2 RS422/485, D-sub 9

Ethernet: 10Base-T/100Base-TX, RJ-45 jack, 328 ft (100 m) maximum wire length  
 SD Card: SDHC Card Slot

### Environmental

Operating Temp: 0°C to 55°C (32°F to 131°F)  
 Storage Temp: -20°C to 60°C (-4°F to 140°F)  
 Humidity: 10 to 90%, non-condensing  
 Shock: IEC/EN61131-2 compliant, 147 m/s<sup>2</sup>, X, Y, Z directions, 3 times  
 Vibration: IEC/EN61131-2 compliant, 5 to 9 Hz single amplitude 3.5 mm (0.14"), 9 to 150 Hz fixed acceleration: 9.8 m/s<sup>2</sup>, X,Y,Z directions for 10 cycles (100 minutes)  
 ESD Immunity: Withstands 6 kV, IEC/EN61000-4-2 Level 3 compliant

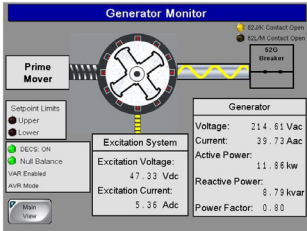
### Agency/Certifications

UL listed  
 CE and UKCA compliant

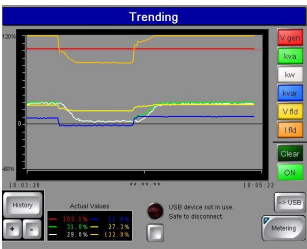
### Physical

Weight: 1.2 kg (2.6 lb)  
 Dimensions (WxHxD): 8.58 x 6.85 x 2.36 inches (218 x 174 x 60 mm)

**For complete specifications, download the instruction manual at [www.basler.com](http://www.basler.com).**



The Generator Monitor screen (left) graphically illustrates excitation system and generator status. Excitation system indicators are provided for ac breaker status, PSS status, field voltage levels, and field current levels. Generator voltage, current, watts, vars, and power factor are also displayed.



The Trending (left) screens provide access to machine parameters such as generator voltage, apparent power, true power, reactive power, field voltage, and field current. This allows for analysis and review in both graphical and tabular forms. Then, data can be easily exported via USB port in a comma-separated-values (.csv) format.

## Style Chart

IDP-801 — □

DECS Model	
B)	DECS-400: Single or dual DECS for synchronous generator or motor application. (Communication via RS-485 or Ethernet)
C)	DECS-250/DECS-250N/DECS-250E: Single or dual DECS for synchronous generator or motor application. (Communication via RS-485) ▲
D)	DECS-250/DECS-250N/DECS-250E: Single or dual DECS for synchronous generator or motor application. (Communication via Ethernet) ▲
E)	DECS-450: Single or dual DECS for synchronous generator application. (Communication via RS-485 or Ethernet)

▲ DECS-250/DECS-250N/DECS-250E firmware 1.03.00 or later is required.

## Related Products

### DECS-250 Digital Excitation Control System

Total control in a compact package provides precise voltage, var and Power Factor regulation, exceptional system response, and generator protection.

### DECS-250E Digital Excitation Control System

Accurate and reliable regulation, control, and protection, in a compact enclosure, for synchronous motors or generators. Three models supply 50, 100, or 200 Adc of continuous excitation current.

### DECS-450 Digital Excitation Control System

A versatile controller for synchronous generators and motors with the flexibility to be utilized for exciter field applications or static exciter applications up to 2,500 Adc.

### SMC-250 Synchronous Motor Controller

Combines the DECS-250 Digital Excitation Control System and the BE1-11m Motor Protection System (prewired, configured, and tested) as a complete unit for easy installation.

### IDP-1500 Interactive Display Panel

Human Machine Interface (HMI) capable of displaying generator system parameters locally and remotely when utilized with a DECS-2100 Digital Excitation Control System.

## Accessories

### Power Supply (24 Vdc, 31 W)

Basler P/N 43970

### Ethernet Switch (8-port)

Basler P/N 41133

### DIN Mounting Rail for Accessories

Basler P/N 9572818004